

Sacred Night, Holy Night. † Stille Nacht, heil'ge Nacht.

(Alice Mattullath.)

(Jos. Mohr.)

F. HERMANN.

Edited by W. F. Ambrosio.

FRANZ GRUBER.

Andante. (Langsam.)

1.

O Come, Little Children. † Die Kinder bei der Krippe.

(Alice Mattullath.)

(Christoph von Schmidt.)

J. A. P. SCHULZ.

Moderato. (Mässig.)

2.

O Sanctissima. † O du fröhliche, o du selige.

(The three great Church Festivals.)

(Johannes Falk.)

Sicilian Fisherman's Song.  
Sicilianisches Fischerlied.

Moderato. (Mässig bewegt.)

3.

From Heav'n I was sent to Earth. † Vom Himmel hoch da komm ich her.

(Alice Mattullath.)

MARTIN LUTHER, 1538.

Choral.

4.

## SOLO PART

A Sprig arose to glory. † Es ist ein Reis entsprungen.

(Alice Mattullath.)

Melody traced back to the 16<sup>th</sup> Century.  
Arrangement by Michael Praetorius, 1609.*Melodie aus dem 16<sup>ten</sup> Jahrhundert.  
Tonsatz von Michael Praetorius, 1609.*

With deep and sincere feeling. (Innig.)

5.

Musical notation for 'A Sprig arose to glory' in G major, 2/4 time. The melody is written on a treble clef staff. It begins with a piano (*p*) dynamic. The first line contains the first six measures, and the second line contains the remaining six measures. The piece ends with a repeat sign. There are various ornaments and slurs throughout the piece.

O Faithful Pine. †

(Alice Mattullath.)

O Tannebaum.

(Ernst Ausschütz.)

Moderato.

Folks-Song:  
Volksweise.

6.

Musical notation for 'O Faithful Pine' and 'O Tannebaum' in G major, 3/4 time. The melody is written on a treble clef staff. It begins with a mezzo-forte (*mf*) dynamic. The first line contains the first six measures, and the second line contains the remaining six measures. The piece ends with a repeat sign. There are various ornaments and slurs throughout the piece.

To-morrow will be Christmas. †

(Alice Mattullath.)

Die Weihnachtsfreude.

Melody by Carl Gottlieb Hering, 1809.  
*Melodie von Carl Gottlieb Hering, 1809.*

Joyfully. (Freudig.)

7.

Musical notation for 'To-morrow will be Christmas' and 'Die Weihnachtsfreude' in G major, 3/4 time. The melody is written on a treble clef staff. It begins with a mezzo-forte (*mf*) dynamic. The first line contains the first six measures, and the second line contains the remaining six measures. The piece ends with a repeat sign. There are various ornaments and slurs throughout the piece.

Praise to the Lord. †

(Alice Mattullath.)

Ehre sei Gott in der Höhe.

(A.H. Niemeyer, 1785.)

Choral.

Melody: Praise the Lord, 1668.  
*Melodie: Lobe den Herrn, 1668.*

8.

Musical notation for 'Praise to the Lord' and 'Ehre sei Gott in der Höhe' in G major, 3/2 time. The melody is written on a treble clef staff. It begins with a choral style. The first line contains the first six measures, and the second line contains the remaining six measures. The piece ends with a repeat sign. There are various ornaments and slurs throughout the piece.



Santa Claus will soon be here. }

(Alice Mattullath.)

Der Weihnachtsmann.

(Hoffmann von Fallersleben.)

Allegretto. (Lebhaft.)

Folks-Song.  
Volkswaise.



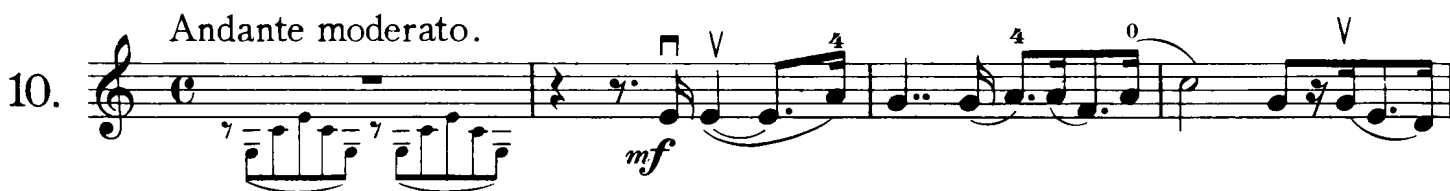
Christmas Song. }

(Cantique de Noel.)

Weihnachtsgesang.

A. ADAM.

Andante moderato.



## Christmas Message.

(Rev. C.J. Oehlschlaeger.)

## Weihnachtsspruch.

(H. Kietke.)

Folks-Song:  
Volksweise.

11. *Andante.*

The musical notation for item 11 consists of two staves. The first staff begins with a treble clef, a key signature of one flat (B-flat), and a 3/4 time signature. The tempo is marked 'Andante.' and the dynamics start with a piano (*p*) marking. The melody features a series of eighth and quarter notes, with some notes beamed together. There are several slurs and phrasing marks. The second staff continues the melody, ending with a final cadence. There are some fingerings indicated by numbers 0 and 4, and a 'V' marking above a note.

## ADESTE FIDELES.

Come hither, ye Faithful.

Herbei o ihr Gläubigen.

*Moderato.*Portuguese Folks-Song:  
Portugiesische Volksweise.

12.

The musical notation for item 12 consists of three staves. The first staff begins with a treble clef, a key signature of three sharps (F#, C#, G#), and a 2/4 time signature. The tempo is marked 'Moderato.' and the dynamics start with a mezzo-forte (*mf*) marking. The melody is more rhythmic, featuring many eighth and sixteenth notes. There are several slurs and phrasing marks. The second and third staves continue the melody, ending with a final cadence. There are many fingerings indicated by numbers 4 and 0, and 'V' markings above notes.

## Prayer to the Holy Christ.

(Rev. C.J. Oehlschlaeger.)

## Gebet an den heiligen Christ.

(E. M. Arndt.)

*Andante. (Ruhig.)*

G. SIEGERT.

13.

The musical notation for item 13 consists of two staves. The first staff begins with a treble clef, a key signature of one sharp (F#), and a common time (C) signature. The tempo is marked 'Andante. (Ruhig.)' and the dynamics start with a piano (*p*) marking. The melody is slow and features many quarter and half notes. There are several slurs and phrasing marks. The second staff continues the melody, ending with a final cadence. There are some fingerings indicated by numbers 4 and 0, and 'V' markings above notes.

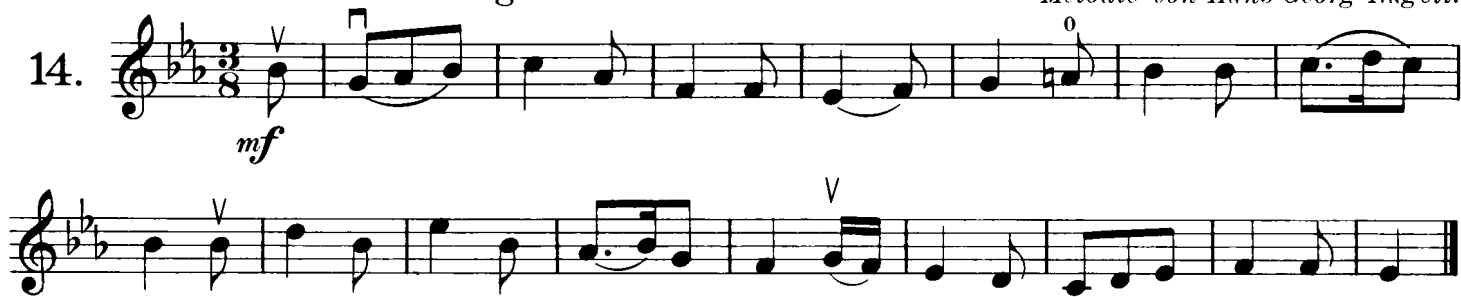
Rejoice in your Redeemer's Birth. } Die schönste Zeit, die liebste Zeit.

(Alice Mattullath.)

Moderato. (Mässig.)

Melody by Hans Georg Nägeli.

Melodie von Hans Georg Nägeli.

14. 

The Christ-Child's Coming. }

(Alice Mattullath.)

Alle Jahre wieder.

(W. Hey.)

Folks-Song.  
Volksweise.

15. 

The Passing of the Old Year. }

(Alice Mattullath.)

Sylvesterlied.

(J. H. Voss.)

J.A.P. SCHULZ.

Andante con moto. (Nichtschnell.)

16. 

## Christmas Songs.

*Fantasia for Violin and Piano.*

## Weihnachtslieder.

*Fantasie für Violine und Pianoforte.*

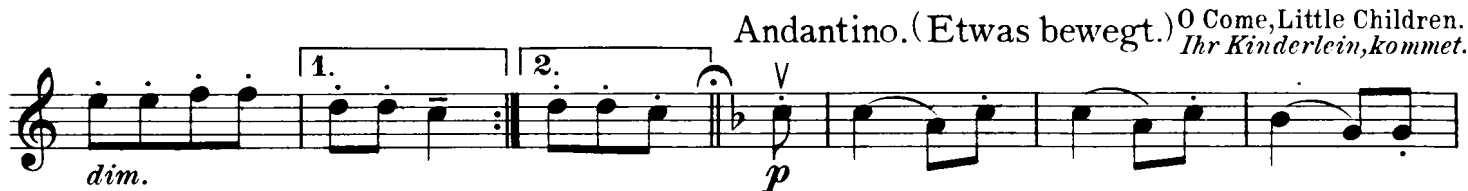
□ Down-Bow.

V Up-Bow.

M. SCHULTZE.

Edited by W.F.AMBROSIO.

Moderato. (Mässig bewegt.)

O Sanctissima.  
O du fröhliche,Allegretto. (Munter.) To-morrow will be Christmas.  
*Morgen, Kinder, wird's was geben.*

Andante moderato. (Ziemlich langsam.) *O Faithful Pine.*  
*O Tannenbaum, o Tannenbaum.*

Musical score for "O Faithful Pine" in G major, 3/4 time. The score consists of four staves. The first staff begins with a forte (*f*) dynamic and a breath mark (V). The second and third staves continue the melody with various dynamics including *f* and *p*. The fourth staff concludes with a *dim e rit.* marking and a key signature change to A major (two sharps) and a time signature change to 6/8. Fingerings (0, 4) and breath marks (V) are indicated throughout.

Andante maestoso. (Langsam, feierlich.) *Sacred Night, Holy Night.*  
*Stille Nacht, heil'ge Nacht.*

Musical score for "Sacred Night, Holy Night" in G major, 6/8 time. The score consists of six staves. The first staff begins with a piano (*p dolce*) dynamic and a breath mark (V). The second and third staves continue the melody with dynamics of *p*, *mf*, and *p dolce*. The fourth, fifth, and sixth staves continue the piece with dynamics of *mf*, *p*, and *pp*. Fingerings (0, 4) and breath marks (V) are indicated throughout.