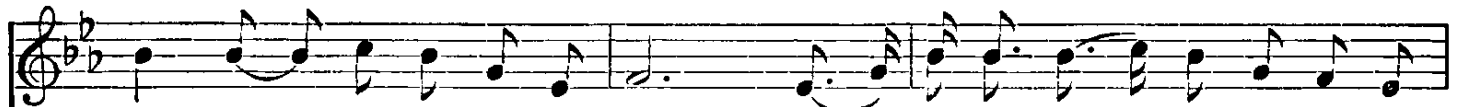


Darling Nelly Gray

B. R. HANBY

Moderato espressivo

1. There's a lone green val-ley by the old Ken-tuck - y shore Where we've
2. When the moon had climb'd the mountain and the stars were shin - ing too, Then I
3. Oh! my eyes are get - ting blind - ed and I can - not see my way; Hark! there's



whil'd many hap - py hours a - way; A - sit - ting and sing - ing by the
 took my love - ly Nel - ly Gray. And I travell'd down the riv - er in my
 some - bod - y knock - ing at the door. I . . . hear the an - gels call - ing and I



lit - tle cot - tage door Where dwelt my love - ly Nel - ly Gray.
 lit - tle red ca - noe While the ban - jo so sweet - ly I did play.
 see my Nel - ly Gray, Fare - well to my old Ken - tuck - y shore.



p First, SOLO ; then CHORUS

Oh! my poor Nel - ly Gray, they have tak - en you a - way, And I'll

This system contains the first vocal line and piano accompaniment. The vocal line is in a soprano clef with a key signature of two flats (B-flat and E-flat) and a common time signature. The piano accompaniment consists of two staves: a right-hand staff in a treble clef and a left-hand staff in a bass clef. The piano part features a steady accompaniment with chords and moving lines. The lyrics are written below the vocal staff.

nev - er see my dar - ling an - y more; I am sit - ting by the riv - er and I'm

This system continues the musical notation. The vocal line and piano accompaniment are consistent with the first system. The lyrics continue below the vocal staff. There are asterisks (*) in the vocal line above the words "more;" and "I am", likely indicating a breath mark or a specific performance instruction.

riten. *a tempo*
weep - ing all the day, For you're gone from the old Ken - tuck - y shore.

This system concludes the piece. The vocal line begins with a *riten.* (ritardando) marking and then returns to *a tempo*. The piano accompaniment also follows these markings. The lyrics conclude with "shore." and a double bar line. There are asterisks (*) at the end of the vocal and piano lines.