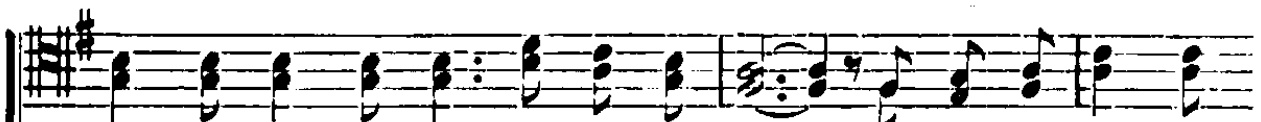
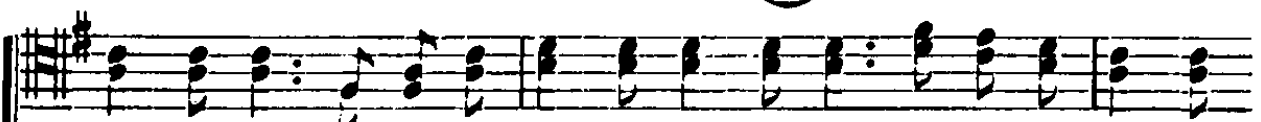
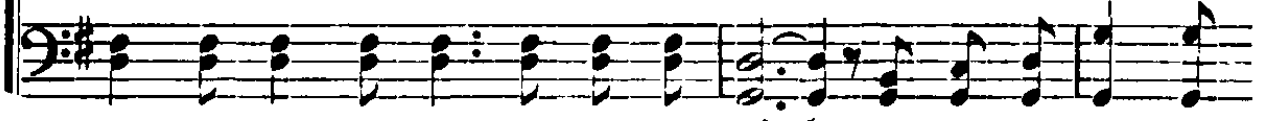




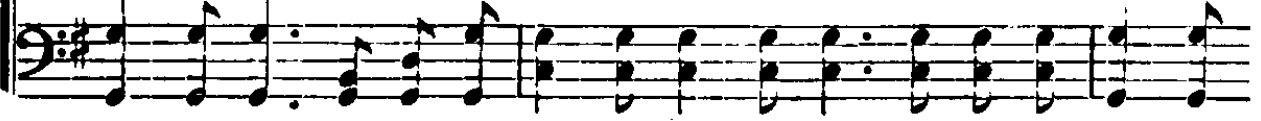
- 1. Riches of earth I may not see, God may prevent; Riches of
- 2. I may not win fair honor's crown, God may prevent; Heavenly
- 3. Earth will not bring me hours of peace, Sin will prevent; I have a



grace are offered me, I am content. Wealth of the world must
 honors are my own, I am content. Children of God and
 peace that cannot cease, God hath it sent. Sweetly the hours of



fade and fail, Earthly delights grow tasteless, stale, I have the wealth that
 heirs of grace, Walking in light before his face, Resting in peace in
 life glide by, Harmless its trials past me fly, Strong in his grace I

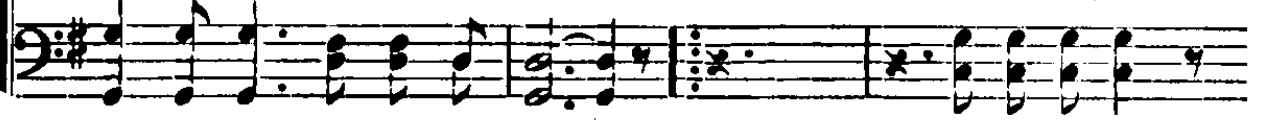


rit.

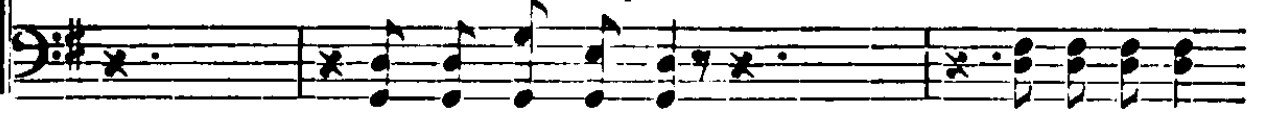
CHORUS.



must avail, Riches of grace. Riches of grace..... for-
 his embrace, Riches of grace. Riches of grace..... are
 all defy, Riches of grace. Riches of grace



ev - er en - dure;..... Riches of grace.....
 fade-less and pure; Riches of grace.....
 for - ev - er en - dure; Riches of grace
 are fadeless and pure;



Riches of Grace—Concluded.

my safe-ty as - sure; Riches of grace!
 my safe-ty as-sure,

rit.

104. The Solid Rock.

EDWARD MOTE.

WILLIAM BRADBURY.

1. { My hope is built on nothing less Than Jesus' blood and righteousness; }
 { I dare not trust the sweetest frame, But wholly lean on Je-sus' name. }
 2. { When darkness veils his lovely face, I rest on his un-chang-ing grace; }
 { In ev-'ry high and stormy gale My anchor holds within the veil. }
 3. { His oath, his covenant, his blood, Support me in the whelming flood; }
 { When all around my soul gives way, He then is all my hope and stay. }
 4. { When he shall come with trumpet sound, Oh, may I then in him be found, }
 { Drest in his righteousness alone, Faultless to stand before the throne. }

CHORUS.

On Christ, the sol - id Rock, I stand; All oth - er ground is

sink - ing sand, All oth - er ground is sink - ing sand.

Arrangement copyright, 1913, by Lorenz Publishing Co., in "Men's Gospel Quartets,"
 International copyright,